

CMA 5000

Multi-Layer Network Test Platform

The CMA 5000 is the industry's premier test and measurement solution designed with the high performance and scalability necessary to meet the stringent demands of telecommunications professionals, while simultaneously accelerating the deployment of new services and reducing the total cost of measurement.

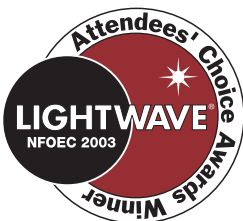
NOTES:

- ¹ All specifications subject to change
- ² The LBA features a 700 MHz processor with 512 MB of ram standard.
- ³ Although Windows® is the platform operating system, it is not accessible unless the Windows desktop option is ordered
- ⁴ SBA refers to small bay adapter, MBA refers to mid bay adapter and LBA refers to large bay adapter.
- ⁵ The LBA will allow 6 bays of modules to be installed, however only 4 provide electrical contacts.
- ⁶ The CMA 5000 with large bay adapter or dedicated AC power source is not available with battery power.

Platform Specifications ¹	
Display	Touch screen, 26.4 cm (10.4") XGA LCD (1024 x 768 pixel resolution)
Processor ²	Ultra-low power 300 MHz Intel Processor
System Memory ²	256 MB
Operating System ³	Windows®
Control Interface	Touch screen, cursor control, dedicated hardkeys and status LEDs
Standard I/O Ports	USB (2), PC card slots (2), Ethernet 10/100(1), IrDA (1), Video (1), PS/2 Mouse (1), PS/2 Keyboard (1), Parallel (1), RS-232 Serial (1)
Data I/O (modular)	CD-ROM (standard) CD-R (optional) 3.5" 1.44 MB floppy drive (optional) GPIB (optional)
Data I/O (fixed)	6 GB hard drive minimum (standard)
Physical Specifications	
Dimensions (H x W x D)⁴	
Platform with SBA (2 bays)	24.1 x 34.3 x 9.5 cm (9.5 x 13.5 x 3.75 inches)
Platform with MBA (4 bays)	24.1 x 34.3 x 15.2 cm (9.5 x 13.5 x 6 inches)
Platform with LBA (up to 5 bays)	24.1 x 34.3 x 24.3 cm (9.5 x 13.5 x 9.5 inches)
Weight	
Platform with SBA (2 bays)	5.4 kg (12 lbs) includes 1 battery
Platform with MBA (4 bays)	6.3 kg (14 lbs) includes 1 battery
Platform with LBA (up to 6 bays) ⁵	8.1 kg (18 lbs) includes power supply

Power Specifications ⁶	
AC (all configurations)	Auto switching 92-132 VAC 47-63 Hz, 184-264 VAC 47-63 Hz
Battery (SBA & MBA only)	Li-Ion (2 slots) - 1 battery standard (second battery optional)
Battery Life	6 hours (2 batteries)
Recharge Time	<3 hours

Please refer to the CMA 5000 Order Guide for valid NetTest module configurations and ordering information at www.nettest.com/products/cma5000/literature.php.



NOTES:

¹ The CMA 5000 platform with large bay adapter or dedicated AC power source does not include the AC charger/adapter or Li-Ion battery

² Must be added as a separate line item

³ Does not include controller

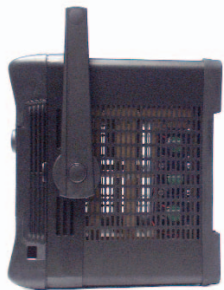
⁴ The talk set module is not available for LBA or dedicated AC configurations



Small Bay Adapter (SBA)



Mid Bay Adapter (MBA)



Large Bay Adapter (LBA)

AC Power Cord Options

OPTION-570LINEUS	US/Japan AC line cord	OPTION-570LINESW	Switzerland AC line cord
OPTION-570LINEEU	Europe AC line cord	OPTION-570LINEIT	Italy AC line cord
OPTION-570LINEUK	United Kingdom AC line cord	OPTION-570LINEAU	Australia AC line cord

Environmental Specifications

	Operation	Storage
Temperature	0° to 45° C (32° to 122° F)	-25° to 60° C (-13° to 140° F)
Humidity	95% max, non-condensing	95% max, non-condensing
Altitude	15,240 m (50,000 ft)	15,240 m (50,000 ft)

Standard Accessories ¹

Color display with touch screen, modular CD-ROM drive, operator's manual, support CD, Li-Ion battery (1), AC charger/adapter, 10/100 MB Ethernet Port, PC card (PCMCIA) slots (2), and choice of AC line cord.

Optical Accessories ² (Photos are available on page 4)

Option-501CD-RW	CMA 5000 CD/read/write module upgrade (requires desktop option)
Option-502FLOPPY	CMA 5000 floppy drive module
Option-503DESKTOP	CMA 5000 Windows® desktop upgrade (adds desktop option to units without)
Option-505MAN	CMA 5000 Replacement platform user's guide
Option-506KEYUS	CMA 5000 US keyboard with trackball
Option-507KEYUS	CMA 5000 US keyboard
Option-508SBA ³	Small bay adapter (includes DC power module and 1 battery)
Option-509MBA ³	Medium bay adapter (includes DC power module and 1 battery)
Option-510BATT	Replacement Li-Ion battery
Option-511AC	Replacement AC charger/adapter
Option-513ACPOWER	AC power module for application configurations with high power requirements
Option-515PRINT	CMA 5000 portable external printer with cable and case
Option-520HCASE	CMA 5000 SBA hard transit case
Option-521HCASEML	CMA 5000 MBA hard transit case
Option-522SCASE	Soft bag, CMA 5000 SBA/MBA
Option-524DXHCASE	Deluxe SBA/MBA hard case with high module capacity
Option-526TRIPOD	Mounting tripod for CMA 5000 SBA
Option-528HCASEL	CMA 5000 LBA hard transit case
Option-530BLANK	Single slot blank filler module
Option-591EXT1	CMA 5000 1 Year extended warranty
Option-592EXT2	CMA 5000 2 Year extended warranty

Options for use with Windows Desktop Option only

Option-580DATA	USB data transfer kit, includes software and cable for Windows® 98/2000
----------------	---

Fiber Optic Talk Set Module Options⁴

The CMA 5000 talk set module installs into (1) CMA 5000 battery slot and allows communication over a single fiber to another CMA 5000 or stand-alone talk set (Option-542).

OPTION-540TFC	Fiber optic talk set module 45 dB/1550 nm - FC connector
OPTION-540TSC	Fiber optic talk set module 45 dB/1550 nm - SC connector
OPTION-540TST	Fiber optic talk set module 45 dB/1550 nm - ST connector
OPTION-541TFC	(1) Option-540TFC talk set module plus (1) Option-542TFC stand-alone talk set
OPTION-541TSC	(1) Option-540TSC talk set module plus (1) Option-542TSC stand-alone talk set
OPTION-541TST	(1) Option-540TST talk set module plus (1) Option-542TST stand-alone talk set
OPTION-542TFC	(1) Stand-alone 45 dB/1550 nm talk set for use with Option-540 - FC connector
OPTION-542TSC	(1) Stand-alone 45 dB/1550 nm talk set for use with Option-540 - SC connector
OPTION-542TST	(1) Stand-alone 45 dB/1550 nm talk set for use with Option-540 - ST connector
OPTION-543T	Spare headset for Option-540, 541, or 542



540 - Talk Set Module



542 - Talk Set

Test Fiber Module Options

The CMA 5000 test fiber modules fit into a single bay and are available with either 1.1 km of single-mode (SM) fiber or 300m of multimode (MM) fiber.

SM connector options: FC, ST or SC

MM connector options: FC, ST or SC

OPTION-550TFMFC	Test fiber module SM 1.1 km - FC connector
OPTION-550TFMSC	Test fiber module SM 1.1 km - SC connector
OPTION-550TFMST	Test fiber module SM 1.1 km - ST connector
OPTION-551TFMFC	Test fiber module 62.5 µm MM 300 m - FC connector
OPTION-551TFMSC	Test fiber module 62.5 µm MM 300 m - SC connector
OPTION-551TFMST	Test fiber module 62.5 µm MM 300 m - ST connector
OPTION-552TFMFC	Test fiber module 50 µm MM 300 m - FC connector
OPTION-552TFMSC	Test fiber module 50 µm MM 300 m - SC connector
OPTION-552TFMST	Test fiber module 50 µm MM 300 m - ST connector



55X - Test Fiber Module

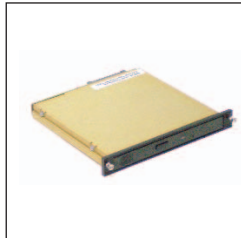
USB Video Inspection Probe (see VIP Application datasheet for additional information)

The CMA 5000 video inspection probe features a 200X/400X user selectable probe that allows fiber optic connectors to be viewed, stored and analyzed (with option 546 or 547) through the CMA 5000 USB port.

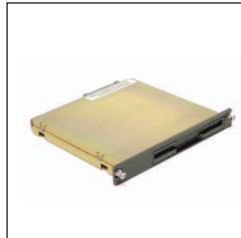
Option-545VIP	USB probe with basic viewing/image capture software, FC, SC, ST, 1.25 mm and 2.5 mm tips
Option-546VIPA	USB probe with basic viewing/image capture/advanced analysis software, hard case, FC, SC, ST, 1.25 mm and 2.5 mm tips (USB feature key)
Option-547VIPA	USB probe with basic viewing/image capture/advanced analysis software, hard case, FC, SC, ST, 1.25 mm and 2.5 mm tips (Parallel port feature key)



545 - USB Video Inspection Probe



501 - CD/RW Drive



502 - Floppy Drive



505 - CMA 5000 Replacement platform user's guide



506 - US Keyboard with Trackball



507 - US Keyboard



511 - AC charger/adaptor



513 - AC Power Module (Module Only)



515 - Portable External Printer



520 - SBA Hard Transit Case



521 - MBA Hard Transit Case



522 - Soft Bag



524 Deluxe Hard Case (case only)



525 - Test Fiber Module



530 - Single Slot Filler Module



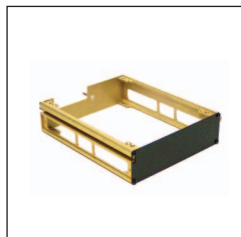
540 - Talk Set Module



546/547 - USB Visual Inspection Probe with case



550 - ORL Module



NetTest A/S
 Kirkebjerg Allé 90
 DK-2605 Brøndby
 Denmark
 Tel: +45 72 11 23 00
 Fax: +45 72 11 23 50
 E-mail: nordic@nettest.com
 Web: www.nettest.com

NetTest Sales Offices

Brazil	+55 11 5505 6688	Italy	+39 06 43 36 24 00
China	+86 10 6467 9888	Singapore	+65 6220 9575
Denmark	+45 72 11 22 00	Spain	+34 91 372 92 27
France	+33 1 49 80 47 48	USA	+1 315 266 5000
Germany	+49 89 99 89 01-0		

NetTest, the pioneer in multi-layer network testing, is a global provider of test and measurement systems, instruments and components for all types of networks and all stages of network development and operation. Our solutions offer leaders in optical, wireless and fixed networking vital insights into network performance, enabling informed business decisions that drive profitability.