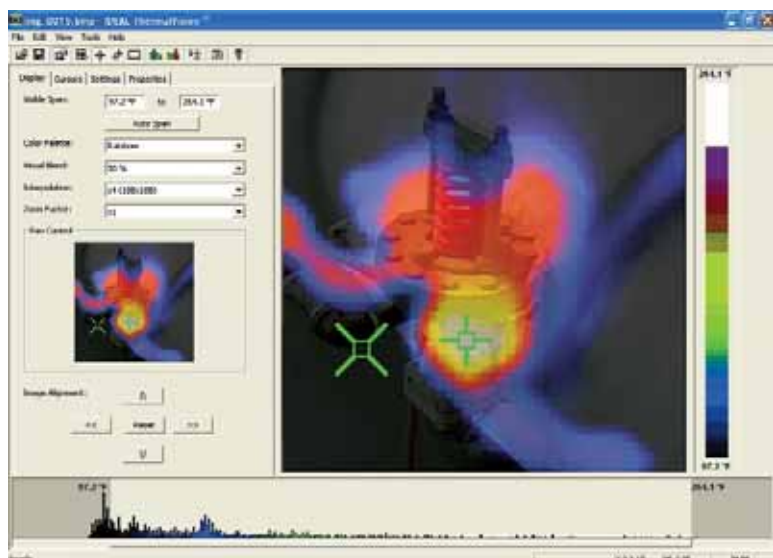




# HeatSeeker™ Thermal Imager



### ThermalVision™ PC Software Included

Easy-to-use software allows image download to PC for analysis.

#### Features

- View, edit and analyze images
- Automatic report generating capabilities
- Disk also includes user manual

Description	Cat. No.
HeatSeeker™ Thermal Imager incl. non-removable rechargeable batteries, Micro-SD card, removable handle, Power Supply, USB cable and carrying case including Quick Start Guide and CD with user manual and ThermalVision-PC software (Analysis and report writer)	61-844EU
<b>Accessories (optional)</b>	
Lamp Shade	61-844LS
Car Charger	61-844CAR



Innovation with a Purpose.

IDEAL INDUSTRIES, INC.  
Becker Place, Sycamore, IL 60178, USA / +1-815-895-5181 \* 800-435-0705 in USA

IDEAL INDUSTRIES (U.K.) Ltd.  
Unit 3, Europa Court, Europa Boulevard, Westbrook, Warrington, Cheshire, WA5 7TN, U. K. / +44-(0)1925-444446  
Ideal\_UK@idealindustries.com

IDEAL INDUSTRIES GmbH  
Gutenbergstr. 10, D-85737 Ismaning, Germany / +49-(0)89-996860, Ideal\_Germany@idealindustries.com  
For complete sales office contact information, visit us at: [www.idealindustries.co.uk](http://www.idealindustries.co.uk)

## IDEAL Test & Measurement. Designed for maximum performance and accuracy.

Electricians trust IDEAL to provide instruments for the needs of professionals — making the job easier and safer, and supported by the finest level of customer service and



### TightSight® Clamp Meters

- (61-764, 61-766, 61-768, 61-772, 61-774)
- Unique TightSight® bottom display
  - Measures up to 660AAC
  - Voltage-presence warning on all lead functions (selectable audible)
  - Bright, bold backlit display
  - Tapered jaws with hook tip
  - Max/min/inrush



### Insulation Meter

- (61-797)
- Checks new and existing installations for proper insulation
  - Checks motor windings for breakdowns in insulation
  - Calculates PI and DAR automatically
  - Tests at 50/100/250/500/1000V



### 3-Phase Power Analyzer

- (61-805, 61-806, 61-807)
- True RMS
  - Single- or three-phase measurements
  - Data logging (1MB memory)
  - Up to one month of recording time
  - 4-channels for voltage measurements



### Infrared (IR) Thermometer

- (61-685)
- Measurement range of -60° to +500° C
  - Single-spot laser sighting
  - Maximum, Minimum, Difference (Δ) and Average temperature displays
  - Programmable High and Low Alarms
  - Supports K-type Thermocouple
  - Adjustable emissivity for maximum accuracy

For complete details on the full line of IDEAL Test & Measurement products, visit [www.idealindustries.co.uk](http://www.idealindustries.co.uk).



## HeatSeeker™ Thermal Imager



Measure temperatures accurately and cost-effectively

- Easy-to-use maintenance monitoring tool
- Auto hot/cold tracker
- Image blending of thermal and digital
- Troubleshoot potential problems quickly
- Mark images with text and voice annotation



Overlays a thermal image on top of a digital image for easy identification of potential problem areas



# HeatSeeker™ Thermal Imager

Troubleshoot and identify potential problems before they happen with the IDEAL HeatSeeker™ Thermal Imager. What makes HeatSeeker so useful are the dual cursors that instantly locate the hottest and coldest temperatures on a live screen, and the camera's ability to overlay a thermal image on top of a digital image for easy on-the-job decision making. HeatSeeker's easy set-up and operation make it a cost-effective tool for electrical service, industrial maintenance and building inspection.



- Class II Laser for view centering
- LED light for working in dark environments
- Digital camera lens for visual image



Side door allows quick access to headphone and USB connections, charging port and removable Micro SD card



## Features

- Blended thermal/digital image
- Hottest/coldest temperatures displayed instantly on live screen
- 2,209 temperature measurements live on camera screen
- Class II Laser
- Built-in LED illuminator
- High and low temperature alarms
- Mark images with text and voice annotation
- Measurement range of -10° C to +350° C
- Adjustable emissivity for maximum accuracy
- Accuracy of ± 2°C or ± 2% of reading in °C, whichever is greater
- Sensitivity: ≤ 0.3°C @ 30°C
- Temperature Operating Range: -5°C to +45°C
- IP Rating: IP54
- 6-hour battery life
- Tripod mountable
- Carrying case included
- ThermalVision PC software included
- 2-year warranty

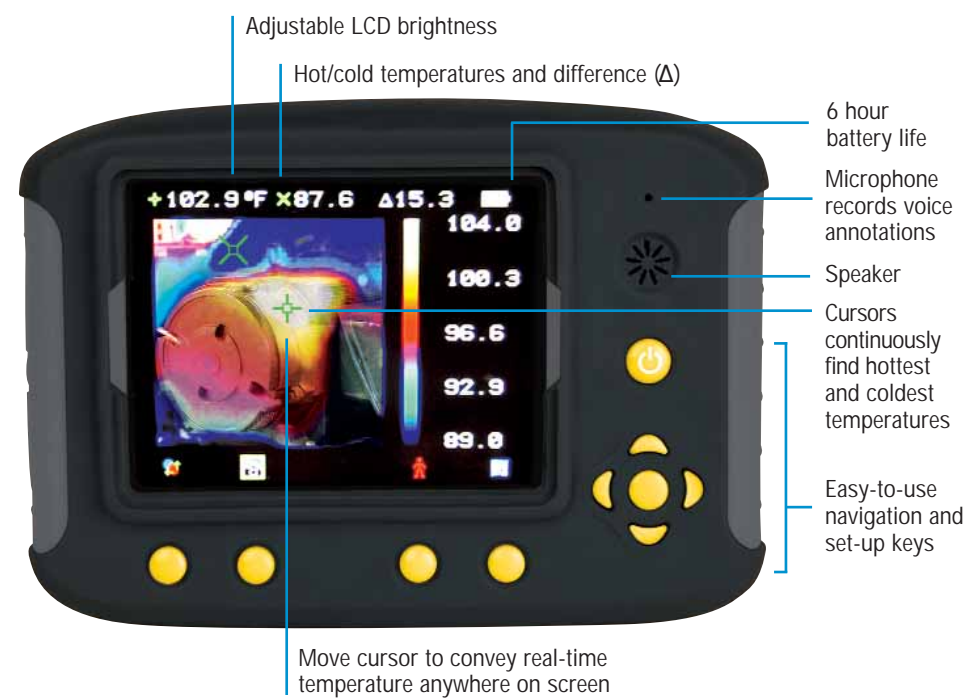


Removable handle



## Adjustable Blended View for Ease of Use

The HeatSeeker captures both a full infrared image and a digital photo. The thermal image can be overlaid on top of the digital image in various % blends for clarity.



Adjustable LCD brightness

Hot/cold temperatures and difference (Δ)

6 hour battery life

Microphone records voice annotations

Speaker

Cursors continuously find hottest and coldest temperatures

Easy-to-use navigation and set-up keys

Move cursor to convey real-time temperature anywhere on screen



Fuse Panels



Steam and Water Systems



Compressor Equipment

Heat Seekers: HOT COLD

The hottest and coldest temperatures are automatically located by the dual cursors to quickly and accurately identify problem areas.

## HeatSeeker™ provides real-time analysis and is ideal for:

### Electrical Safety

- Identifies overloaded circuits, loose/corroded connections and failing breakers in electrical panels
- Identifies blown fuses, overloads, phase imbalance and harmonics problems
- Identifies hot spots from high resistance connections

### Energy Efficiency

- Identifies inefficient heating and cooling transfer
- Identifies draft sources from missing insulation in rafters/walls/floors
- Identification of problem areas helps reduce heat gain/loss and carbon footprint

### Building Maintenance

- Discovers sources of moisture in roofs and areas behind walls
- Checks air distribution for blockages in pipes, damaged duct work and insulation gaps
- Checks fluid distribution for stuck valves and burst pipes

### Preventive Maintenance

- Identifies equipment efficiencies/inefficiencies
- Applications include motors, pumps, boilers, radiators, heaters, chillers and transformers